

HUSTLER® COMMERCIAL ZERO-TURN MOWER

# HUSTLER Z<sup>®</sup> DIESEL

DIESEL POWER  
TO DO ANY JOB

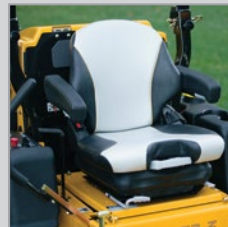


## HUSTLER ZERO-TURN PRECISION PAIRED WITH THE STAMINA OF A DIESEL ENGINE

The Hustler® Z Diesel gives you all the great features of a Hustler product paired with the fuel-economy of a diesel. With a powerful 25-horse power diesel engine for heavy-duty mowing jobs, it also features Hustler's acclaimed VX4® deck technology proven to cut and disperse grass more quickly and efficiently regardless of conditions. Round it out with speeds of up to 19 km per hour, and you've got a diesel worthy of the Hustler name.



**LEGENDARY VX4® DECK**  
Engineered for a 'perfect' cut every time.



**ALL-DAY COMFORT**  
Features Grammer suspension seat with operator isolator.



**PATENTED BELT DRIVE SYSTEM**  
Helps provide long-life to your machine.


LIMITED  
**LIFETIME WARRANTY**  
FRAME & LEADING EDGE OF DECK

LIMITED WARRANTY  
**2 YEAR NO**  
HOUR LIMIT

OR

LIMITED WARRANTY  
**5 YEAR 500**  
HOUR

 **HUSTLER®**

 **Find A Hustler Dealer**  
visit [www.hustlermowers.co.nz](http://www.hustlermowers.co.nz)

## ENGINE

Manufacturer	Shibaura
HP	25HP - Shibaura Tier 4
Displacement	1,131cc
Cooling	Liquid cooled, direct-drive, mechanical cooling fan
Air Cleaner	Heavy duty canister
Engine Warranty	3 year

## DRIVE SYSTEM

Type	Dual hydrostatic
Pumps	Tandem 21cc Hydro-Gear pumps
Wheel Motors	Parker TG0335
Hydraulic Lines	Stainless steel Parker seal loc technology
Hydraulic Cooling	Oil cooler with 8" fan
Reservoir Capacity	1.3 gallons (4.9L)
Speed	12 mph (19 kph)
Parking Brakes	Patented automatic

## DECKS

Cutting Width	Side discharge: 60", 72" Rear discharge: 60", 72"
Cutting Heights	1" - 5.5"
Deck Lift	Foot operated
Depth	5.5"
Blades	3
Blade Length	60" deck: 3 - 20.5" x 3.0" x .203" 72" deck: 3 - 24.5" x 3.0" x .250"
Spindles	Ductile cast iron with steel shafts and sealed ball bearings
Deck Belts	1
Drive	Electric PTO clutch
Construction	7 ga. welded steel
Spindle Mounts	Reinforced 7 ga. spindle mount disc
Impact/Trim Areas	11 ga. formed channel w/ rolled edge

## CONSTRUCTION

Frame	1.5" x 3.0" x .187" steel
Front Caster Wheels	Mounted tapered greasable bearings
Front Caster Forks	Fabricated 1/2" steel

## GENERAL

Seat	Grammer premium suspension seat, isolator platform
Fuel Capacity	14.4 gallons (54.5L)
Cup Holder	Yes
Front Tire	13 x 6.5 - 6
Drive Tire	24 x 12 - 12

## DIMENSIONS

Weight	60": 1645 lbs (746.2 kg)
	60" RD: 1755 lbs (796.1 kg)
	72": 1700 lbs (771.1 kg)
	72" RD: 1805 lbs (818.7 kg)
Height w/rops up	69" (1.75m)
Height w/rops Folded	51" (1.30m)
Length	60", 60" RD deck: 86.8" (2.21m)
	72", 72" RD deck: 90.4" (2.30m)
Width w/chute up	60", 60" RD deck: 66" (1.68m)
	72", 72" RD deck: 78" (1.98m)
Tire Width	60", 60" RD, 72", 72" RD deck: 56" (1.42m)

## PRODUCTIVITY\*

Acres Per Hour	60": 5.57
	72": 6.68

## OPTIONAL ACCESSORIES

Mulch kit  
Light kit  
Semi pneumatic front tires  
FlexForks™  
Steering lever extension kit  
Sand kit  
Single/dual anti-scalp wheels  
Stripe kit  
Electric deck lift  
Beacon kit  
Flasher kit  
Hitch kit  
High vacuum deck kit

\* Number based on 80% efficiency. This rating is to account for actual mowing conditions including overlapping, turning and terrain.

## DIESEL | AT A GLANCE

- 60" or 72" side-discharge VX4® deck – 7-gauge thick deck offering clean cut, excellent performance in all conditions
- 60" or 72" rear-discharge deck
- Heavy-duty fabricated frame – unmatched durability
- Exclusive SmoothTrak™ steering – responsive, precise control
- Patented automatic park brake
- Patented belt drive system - provides up to three times longer belt life
- Clean, compact, service-friendly design
- Grammer suspension seat with operator isolator



Visit [hustlermowers.co.nz](http://hustlermowers.co.nz)  
and try our compare products tool!